

# MINI BASKETBALL HOOPS BY JUSTINTYMESPORTS



## Model: Mini-Pro Door Mount

Thank you for purchasing a Mini Basketball Hoop by JustInTymeSports! Your new basketball set should provide you many years of fun basketball play.

### Unpacking Instructions:

Your new mini basketball hoop has been carefully packed to prevent damage. Please verify that you have received all of the components shown on the parts list (see last page).

### Assembly Instructions:

You will need a phillips head screwdriver and a 7/16" wrench or an adjustable wrench. The door brackets and backboard padding have been pre-assembled. You will only need to attach the rim assembly and net.

#### I. Attaching the Rim Assembly

1. Orient the Backing Plate so the painted surface is against the Backboard and the bottom of the Backing Plate is below the Backboard (see Figure 1).
2. Attach the Rim Assembly with the (4) Rim Screws and (4) Lock Nuts (see Figure 2).

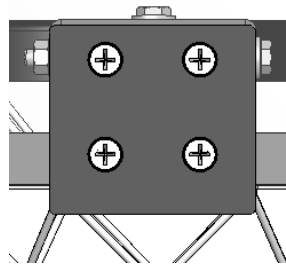


Figure 1

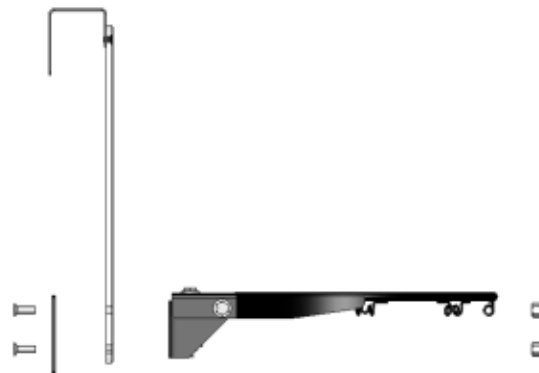
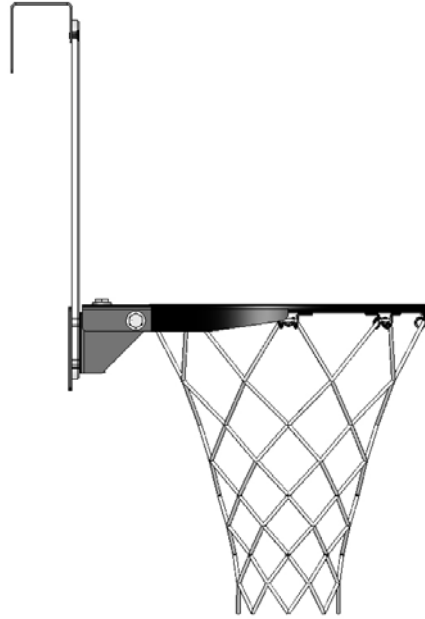


Figure 2

## II. Attach the Net

1. Attach the Net to the eyelets. The knot in the bottom row of the Net should face the back.



### Mounting the hoop:

The Door Bracket is designed to mount to most interior doors and may be able to be mounted to either side of the door depending on the size and location of the door molding.

### Adjusting the JustFlex2™ Spring:

The JustFlex2™ Spring is pre-adjusted at the factory. The Spring Bolt and Nut should be tightened so there is only a slight compression of the spring. The front of the rim should flex down about 2" when you pull down.

### Caring for your backboard:

Your backboard is made from polycarbonate which is known for its durability and break resistance. Wash your backboard with mild soap and water. Use a clean soft cloth, applying only light pressure. Rinse with clear water and dry by blotting with a damp cloth or chamois. Do not use window cleaning sprays, kitchen scouring compounds, or solvents.

**NOTE: Although the rim and backboard are very strong, they are NOT designed for hanging. You may dunk on the rim but NEVER HANG ON THE RIM.**

### Mini-Pro Door Mount Contents:

(1) Backboard Assembly (1) Rim Assembly (1) Backing Plate (1) Net	(1) Mini Basketball (4) 1/4-20 x 7/8" Rim Screws (4) 1/4-20 Self Locking Nuts
--	---